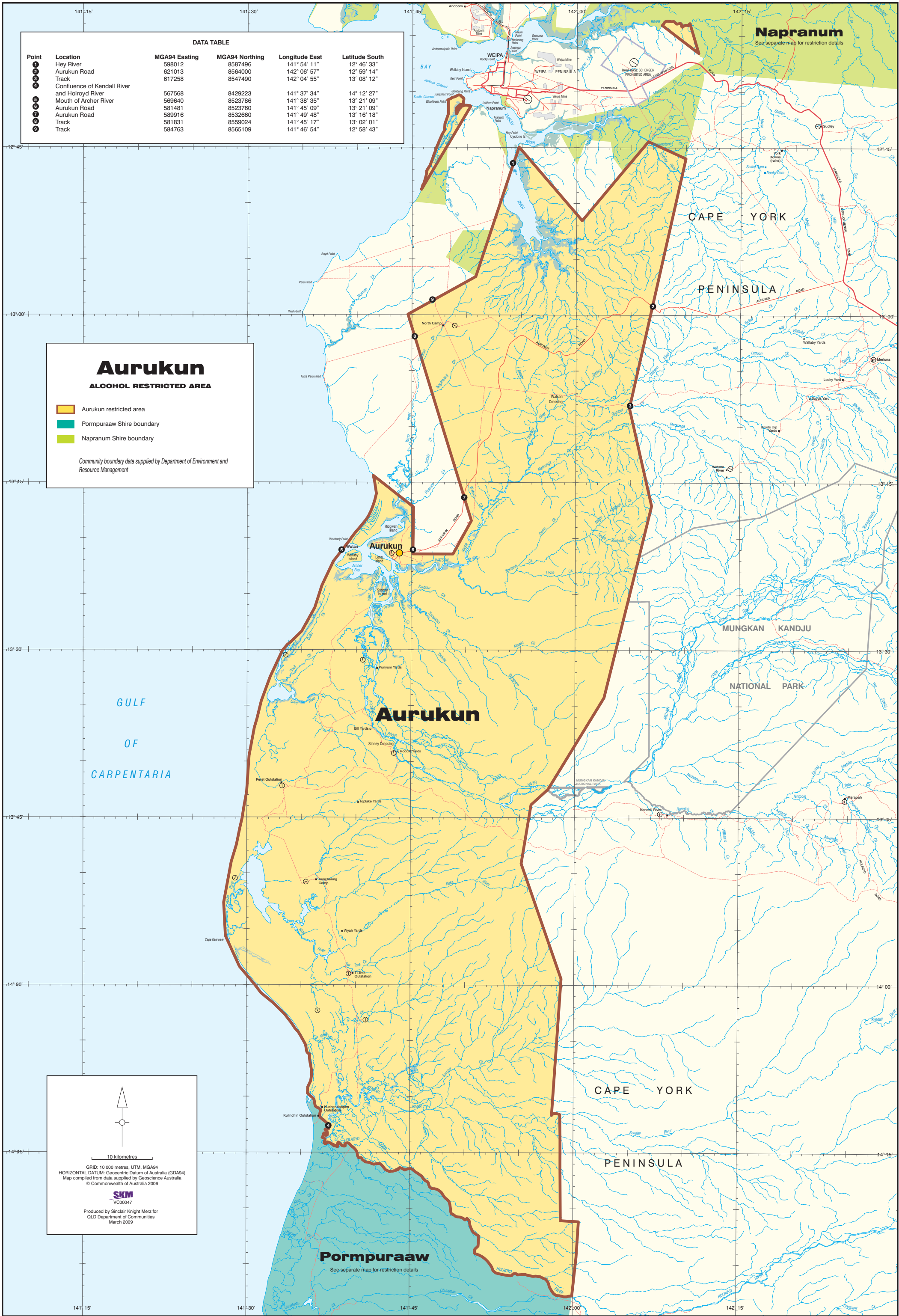


DATA TABLE					
Point	Location	MGA94 Easting	MGA94 Northing	Longitude East	Latitude South
1	Hey River	598012	8587496	141° 54' 11"	12° 46' 33"
2	Aurukun Road	621013	8564000	142° 06' 57"	12° 59' 14"
3	Track	617258	8547490	142° 04' 55"	13° 08' 12"
4	Confluence of Kendall River and Holroyd River	567568	8429223	141° 37' 34"	14° 12' 27"
5	Mouth of Archer River	569640	8523786	141° 38' 35"	13° 21' 09"
6	Aurukun Road	581481	8523760	141° 45' 09"	13° 21' 09"
7	Aurukun Road	589916	8532660	141° 49' 48"	13° 16' 18"
8	Track	581831	8559024	141° 45' 17"	13° 02' 01"
9	Track	584763	8565109	141° 46' 54"	12° 58' 43"

Aurukun
ALCOHOL RESTRICTED AREA

- Aurukun restricted area
- Pormpuraaw Shire boundary
- Napranum Shire boundary

Community boundary data supplied by Department of Environment and Resource Management



Napranum
See separate map for restriction details

CAPE YORK

PENINSULA

Aurukun

MUNGKAN KANDJU

NATIONAL PARK

GULF OF CARPENTARIA

CAPE YORK

PENINSULA

Pormpuraaw
See separate map for restriction details

10 kilometres

GRID: 10 000 metres, UTM, MGA94
HORIZONTAL DATUM: Geocentric Datum of Australia (GDA94)
Map compiled from data supplied by Geoscience Australia
© Commonwealth of Australia 2006

SKM
VC00047

Produced by Sinclair Knight Merz for
QLD Department of Communities
March 2009