

**Figure 1: Full legislative scheme (general disability services)*
Steps 1 to 5**

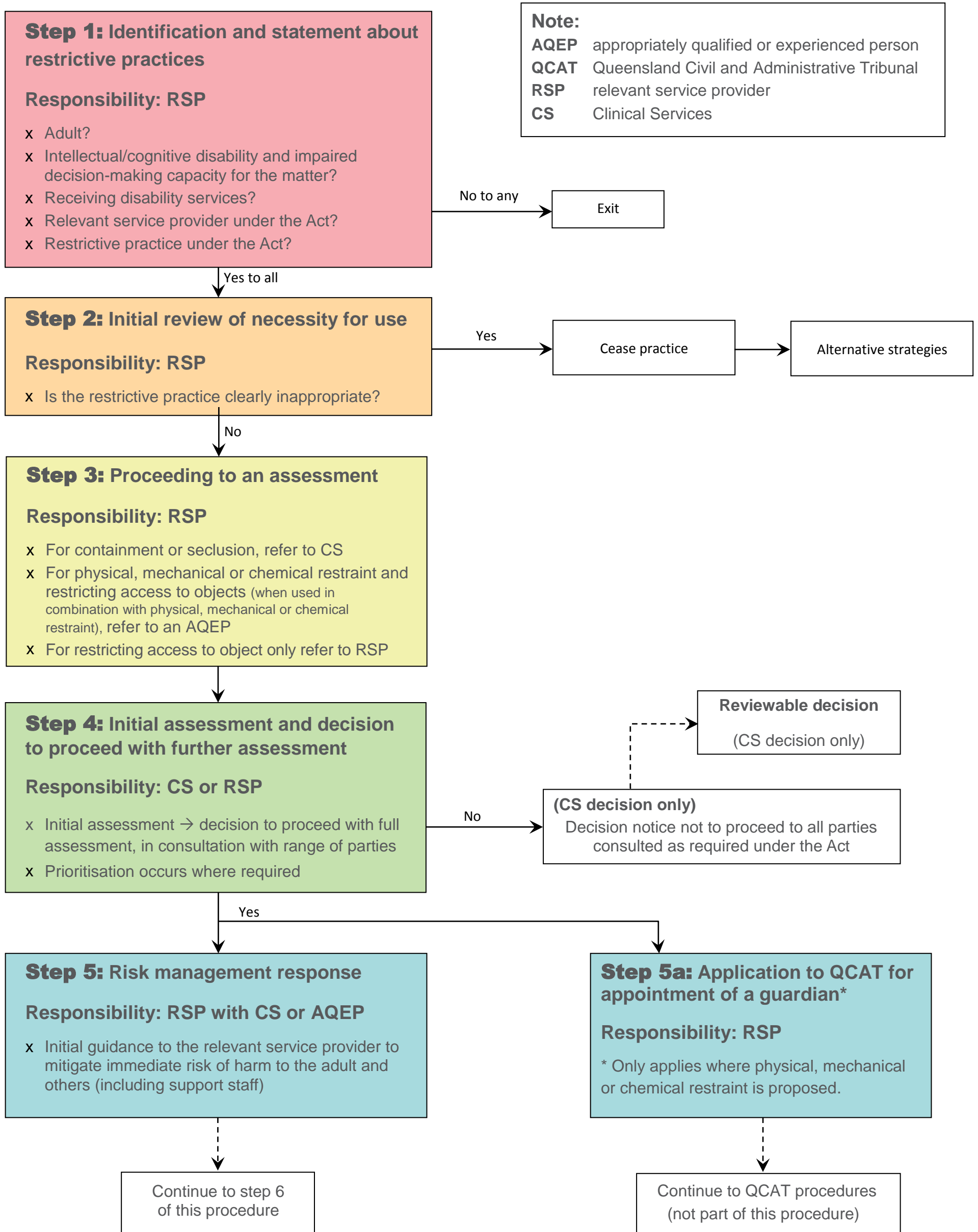


Figure 2: Full legislative scheme (general disability services) * Steps 6 to 8

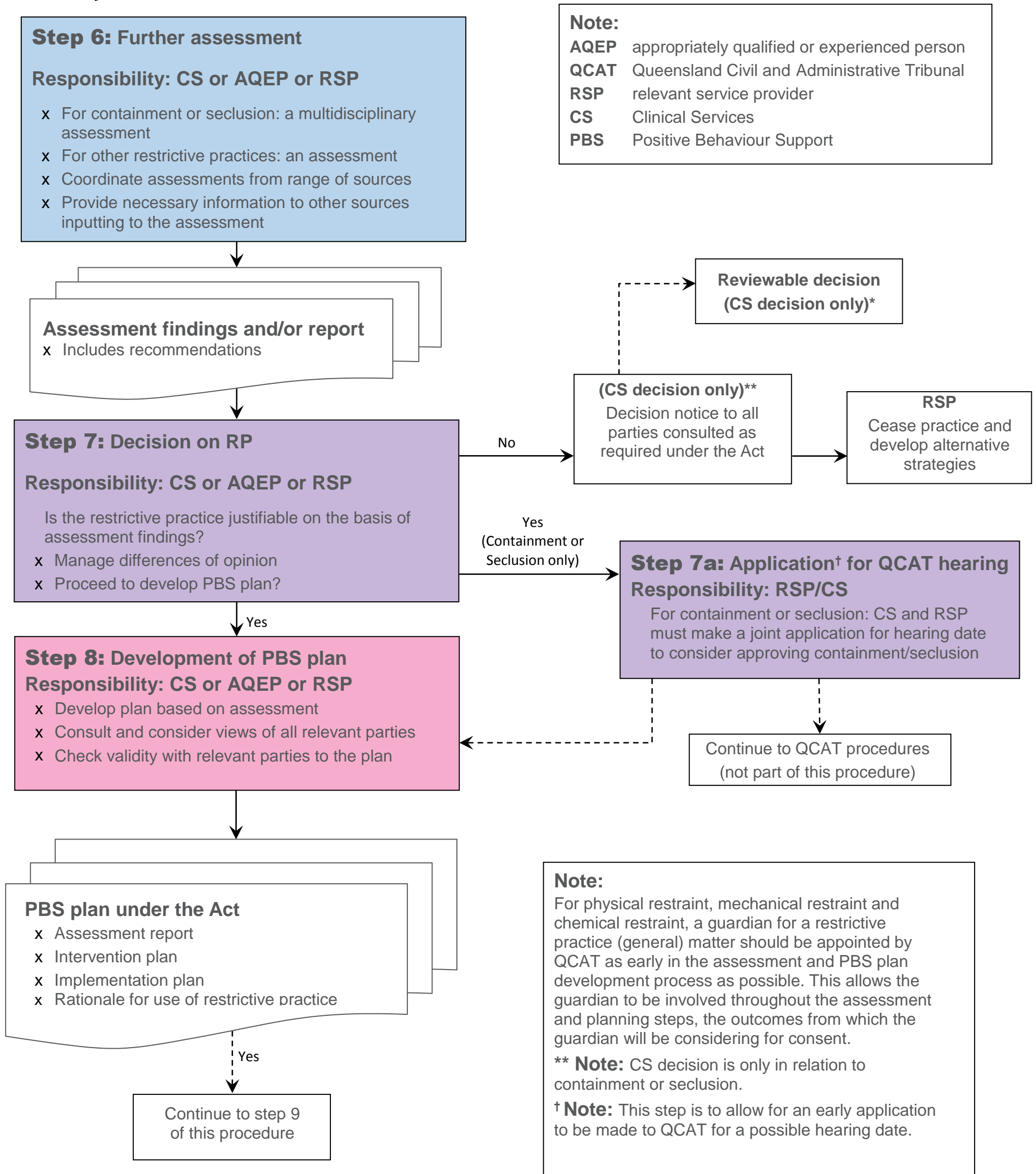
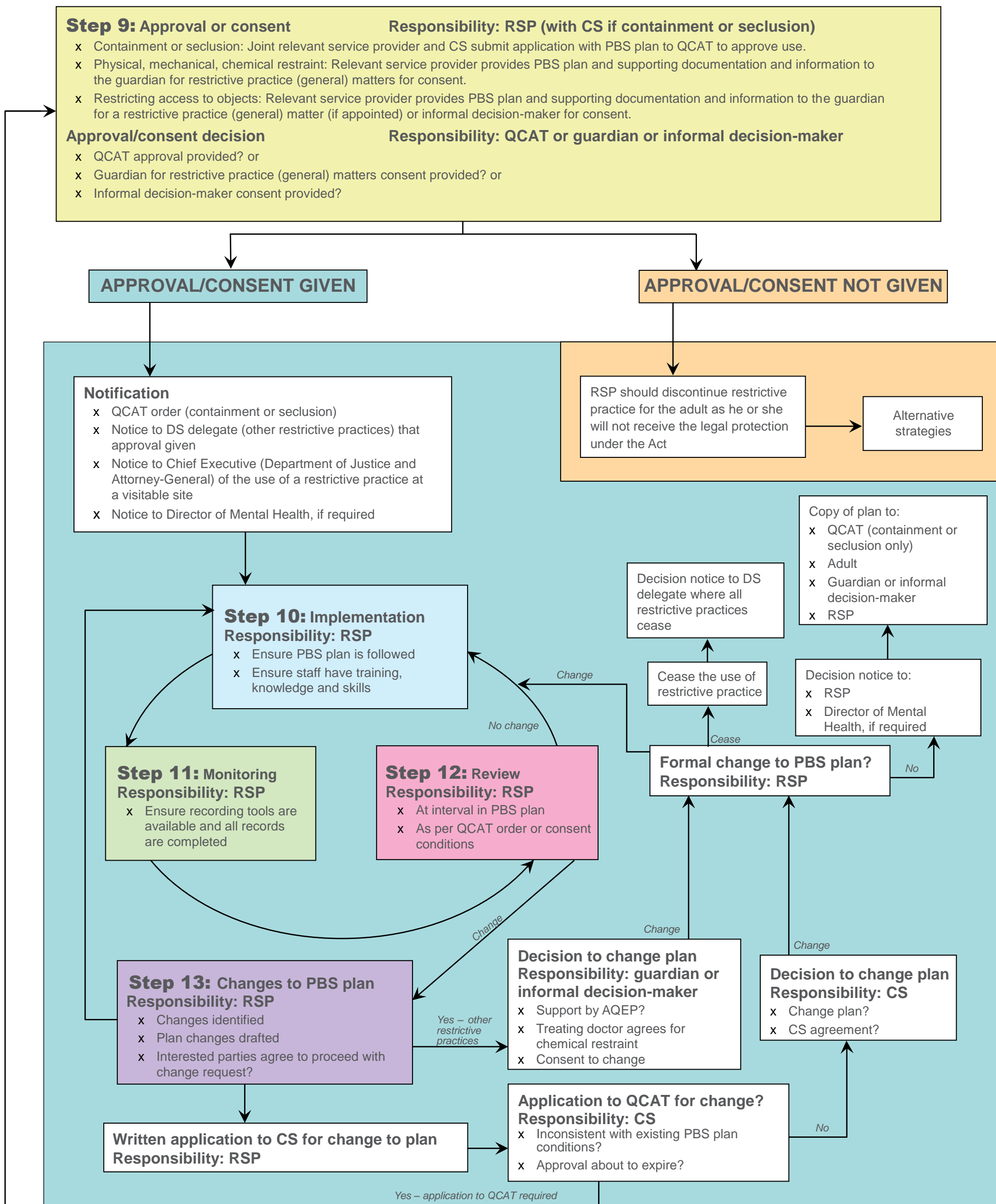


Figure 3: Full legislative scheme requirements (general disability services) Steps 9 to 13



Note: **AQEP** appropriately qualified or experienced person **QCAT** Queensland Civil and Administrative Tribunal **PBS** positive behaviour support
RP restrictive practice **RSP** relevant service provider **CS** Clinical Services
DS Department of Communities (Disability Services) (formerly Disability Services Queensland)

Note: the flowchart is not intended to be a comprehensive guide to the legislation, and if there is any inconsistency, the relevant legislation will prevail.